

# Campus Side Unit Rates 2026-2027



CAMPUS SIDE

(724) 200-2244

[campussidepm@dbcliving.com](mailto:campussidepm@dbcliving.com)

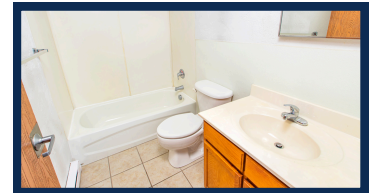
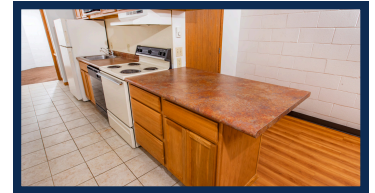
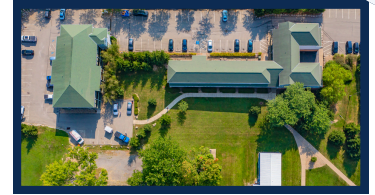
400 Campus Side Cir, Slippery

Rock, PA 16057



## South Building Resident Pays Electric, Water and Sewage

Unit	Early Renewal - October 20th		Tier 1 - Nov 15th		Tier 2 - January 31st		Tier 3 - Regular	
	Cost per Bed	Price with Less Occupants	Cost per Bed	Price with Less Occupants	Cost per Bed	Price with Less Occupants	Cost per Bed	Price with Less Occupants
South 119-200-219 1 Bed	\$815.00		\$ 830.00		\$ 850.00		\$ 870.00	
100 Deluxe 1 Bed	\$820.00		\$ 840.00		\$ 860.00		\$ 880.00	
120 Super Deluxe 1 Bed	\$850.00		\$ 860.00		\$ 875.00		\$ 900.00	
Terrace Single Suite	\$775.00		\$ 795.00		\$ 810.00		\$ 850.00	
Terrace 1 Bed	\$775.00		\$ 795.00		\$ 810.00		\$ 850.00	
2 Bed / 1 Bath	\$500.00	1 person (\$1000)	\$ 515.00	1 person (\$1030)	\$ 525.00	1 person (\$1050)	\$ 545.00	1 person (\$1090)
2 Bed / 2 Bath	\$530.00	1 person (\$1030)	\$ 545.00	1 person (\$1060)	\$ 555.00	1 person (\$1110)	\$ 570.00	1 person (\$1140)
4 Bed / 1.5 Bath	\$400.00	3 people (\$534) 2 people (\$800)	\$ 410.00	3 people (\$545) 2 people (\$820)	\$ 420.00	3 people (\$560) 2 people (\$840)	\$ 440.00	3 people (\$587) 2 people (\$880)
4 Bed / 2 Bath	\$410.00	3 people (\$547) 2 people (\$820)	\$ 420.00	3 people (\$560) 2 people (\$840)	\$ 430.00	3 people (\$560) 2 people (\$840)	\$ 450.00	3 people (\$600) 2 people (\$900)
Unit #22 Studio	\$610.00		\$ 625.00		\$ 640.00		\$ 655.00	
Unit #23 Small Efficiency	\$530.00		\$ 545.00		\$ 555.00		\$ 575.00	



## North Building Resident Pays Electric, Water and Sewage

Unit	Early Renewal - October 20th		Tier 1 - Nov 15th		Tier 2 - January 31st		Tier 3 - Regular	
	Cost per Bed	Price with Less Occupants	Cost per Bed	Price with Less Occupants	Cost per Bed	Price with Less Occupants	Cost per Bed	Price with Less Occupants
North Single Suite	\$765.00		\$780.00		\$790.00		\$815.00	
1 Bed / 2 Story Townhouse	\$750.00		\$760.00		\$775.00		\$800.00	
4 Bed / 4 Bath	\$590.00	3 people (\$787) 2 people (\$1180)	\$ 600.00	3 people (\$800) 2 people (\$1200)	\$610.00	3 people (\$810) 2 people (\$1220)	\$625.00	3 people (\$830) 2 people (\$1250)



## Villas Resident Pays Electric, Water and Sewage

Unit	Early Renewal - October 20th	Tier 1 - Nov 15th	Tier 2 - January 31st	Tier 3 - Regular
	Cost per Bed	Cost per Bed	Cost per Bed	Cost per Bed
Personal Villa	\$715.00	\$735.00	\$750.00	\$775.00
Deluxe Personal Villa	\$830.00	\$850.00	\$870.00	\$890.00

## 177 Harmony Road Resident Pays Electric

Unit	Early Renewal - October 20th		Tier 1 - Nov 15th		Tier 2 - January 31st		Tier 3 - Regular	
	Cost per Bed	Price with Less Occupants	Cost per Bed	Price with Less Occupants	Cost per Bed	Price with Less Occupants	Cost per Bed	Price with Less Occupants
3 Bed / 2.5 Bath	\$520.00	2 people (\$780)	\$530.00	2 people (\$795)	\$540.00	2 people (\$810)	\$550.00	2 people (\$825)

## Amenities

- Free High-Speed Internet
- Free Parking for Residents
- Happy Bus Pick Up & Drop Off
- 24/7 Fitness Center
- Laundry Facilities
- Free Garbage
- Clubhouse with WiFi, Tanning, Coffee, Snacks, Cable & Pool Table
- Pavilion with basketball hoop, picnic tables and grills for resident use

<https://www.campussidesr.com/>



## CAMPUS SIDE

**191 Harmony Road** Resident Pays Electric, Water and Sewage

(724) 200-2244

[campussidepm@dbcliving.com](mailto:campussidepm@dbcliving.com)

400 Campus Side Cir, Slippery Rock  
Rock, PA 16057

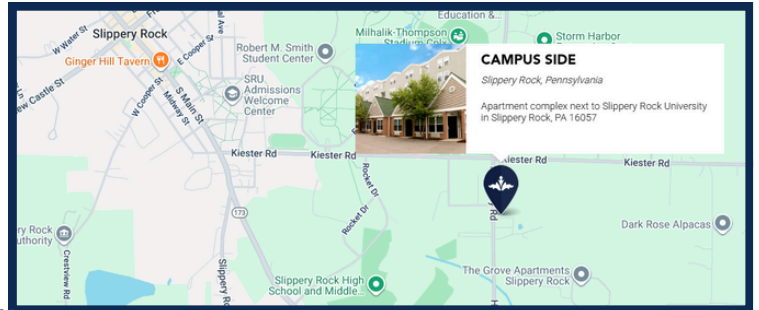


Unit	Early Renewal - October 20th		Tier 1 - Nov 15th		Tier 2 - January 31st		Tier 3 - Regular	
	Cost per Bed	Price with Less Occupants	Cost per Bed	Price with Less Occupants	Cost per Bed	Price with Less Occupants	Cost per Bed	Price with Less Occupants
4 bed / 2 Bath	\$400.00	3 people (\$534) 2 people (\$800)	\$415.00	3 people (\$555) 2 people (\$830)	\$425.00	3 people (\$565) 2 people (\$850)	\$450.00	3 people (\$600) 2 people (\$900)
3 Bed / 2 Bath	\$515.00	2 people (\$780)	\$530.00	2 people (\$795)	\$545.00	2 people (\$817)	\$560.00	2 people (\$840)
2 Bed / 2 Bath	\$550.00	1 person (\$1100)	\$560.00	1 person (\$1100)	\$570.00	1 person (\$1140)	\$575.00	1 person (\$1150)



**197 Harmony Road** Resident Pays Electric and Gas

Unit	Early Renewal - October 20th	Tier 1 - Nov 15th	Tier 2 - January 31st	Tier 3 - Regular
	Cost per Bed	Cost per Bed	Cost per Bed	Cost per Bed
1 Bed / 1 Bath	\$815.00	\$830.00	\$850.00	\$870.00



**409 Kiester Road** Resident Pays Electric, Water, Sewage and Gas

Unit	Early Renewal - October 20th		Tier 1 - Nov 15th		Tier 2 - January 31st		Tier 3 - Regular	
	Cost per Bed	Price with Less Occupants	Cost per Bed	Price with Less Occupants	Cost per Bed	Price with Less Occupants	Cost per Bed	Price with Less Occupants
4 Bed / 2 Bath #1	\$500.00	3 people (\$667) 2 people (\$1000)	\$510.00	3 people (\$680) 2 people (\$1020)	\$525.00	3 people (\$700) 2 people (\$1050)	\$550.00	3 people (\$733) 2 people (\$1100)
4 Bed / 2 Bath #2	\$500.00	3 people (\$667) 2 people (\$1000)	\$510.00	3 people (\$680) 2 people (\$1020)	\$525.00	3 people (\$700) 2 people (\$1050)	\$550.00	3 people (\$733) 2 people (\$1100)



**413 Kiester Road** Resident Pays Electric, Water, Sewage and Gas

Unit	Early Renewal - October 20th		Tier 1 - Nov 15th		Tier 2 - January 31st		Tier 3 - Regular	
	Cost per Bed	Price with Less Occupants	Cost per Bed	Price with Less Occupants	Cost per Bed	Price with Less Occupants	Cost per Bed	Price with Less Occupants
4 Bed / 2 Bath #1	\$500.00	3 people (\$667) 2 people (\$1000)	\$510.00	3 people (\$680) 2 people (\$1020)	\$525.00	3 people (\$700) 2 people (\$1050)	\$550.00	3 people (\$733) 2 people (\$1100)
4 Bed / 2 Bath #2	\$500.00	3 people (\$667) 2 people (\$1000)	\$510.00	3 people (\$680) 2 people (\$1020)	\$525.00	3 people (\$700) 2 people (\$1050)	\$550.00	3 people (\$733) 2 people (\$1100)



<https://www.campussidesr.com/>

