

Campus Side Unit Rates 2026-2027



CAMPUS SIDE

(724) 200-2244
campussidepm@dbcliving.com
400 Campus Side Cir, Slippery
Rock, PA 16057

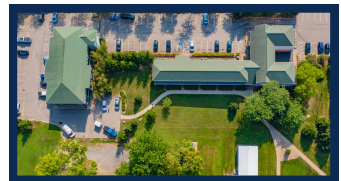


South Building Resident Pays Electric, Water and Sewage

Unit	Pricing
	<i>Cost per Bed</i>
South 119-200-219 1 Bed	SOLD OUT
100 Deluxe 1 Bed	SOLD OUT
120 Super Deluxe 1 Bed	SOLD OUT
Terrace Single Suite	\$649
Terrace 1 Bed	\$649
2 Bed / 1 Bath	\$375 • Private (\$750)
2 Bed / 2 Bath	SOLD OUT
4 Bed / 1.5 Bath	\$325 • 2 People (\$675)
4 Bed / 2 Bath	\$325 • 2 People (\$675)
Unit #22 Studio	SOLD OUT
Unit #23 Small Efficiency	SOLD OUT

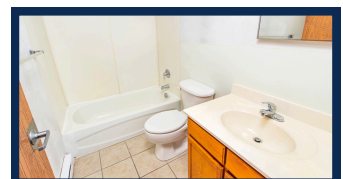
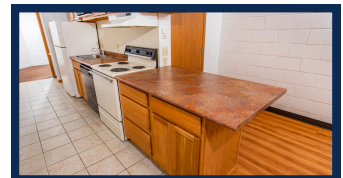
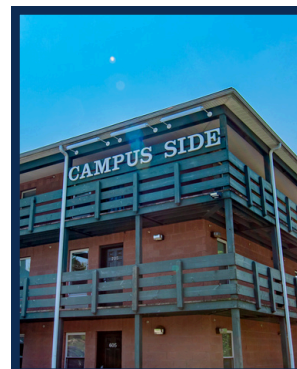
North Building Resident Pays Electric, Water and Sewage

Unit	Pricing
	<i>Cost per Bed</i>
North Single Suite	\$625
1 Bed / 2 Story Townhouse	SOLD OUT
4 Bed / 4 Bath	\$350 • 2 People (\$750)



Villas Resident Pays Electric, Water and Sewage

Unit	Pricing
	<i>Cost per Bed</i>
Personal Villa	\$550
Deluxe Personal Villa	SOLD OUT



Campus Side Unit Rates 2026-2027



(724) 200-2244
campussidepm@dbcliving.com
 400 Campus Side Cir, Slippery
 Rock, PA 16057



177 Harmony Road Resident Pays Electric

<u>Unit</u>	<u>Pricing</u>
	<i>Cost per Bed</i>
3 Bed / 2.5 Bath	\$550 • 2 Persons (\$825)



191 Harmony Road Resident Pays Electric, Water and Sewage

<u>Unit</u>	<u>Pricing</u>
	<i>Cost per Bed</i>
4 Bed / 2 Bath	\$325 • 2 People (\$675)
3 Bed / 2 Bath	\$560.00 • 2 Persons (\$840)
2-Bed / 2-Bath	SOLD OUT



Amenities

- Free High-Speed Internet
- Free Parking for Residents
- Happy Bus Pick Up & Drop Off
- 24/7 Fitness Center
- Laundry Facilities
- Free Garbage
- Clubhouse with WiFi, Tanning, Coffee, Snacks, Cable & Pool Table
- Pavilion with basketball hoop, picnic tables and grills for resident use

197 Harmony Road Resident Pays Electric and Gas

<u>Unit</u>	<u>Pricing</u>
	<i>Cost per Bed</i>
1 Bed / 1 Bath	\$870.00

409 Kiester Road Resident Pays Electric, Water, Sewage and Gas

<u>Unit</u>	<u>Pricing</u>
	<i>Cost per Bed</i>
4 Bed / 2 Bath #1	\$325 • 2 People (\$675)
4 Bed / 2 Bath #2	\$325 • 2 People (\$675)

